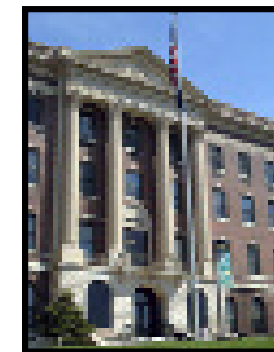
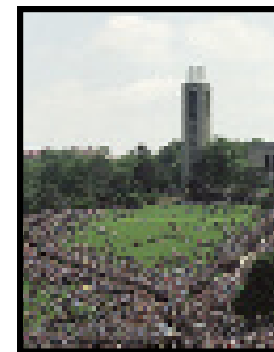




The University of KANSAS

Undergraduate Study

Atmospheric Science



Color photos, from left: KU's main campus is in Lawrence, Kansas. Graduates walk down the Hill at commencement. KU Medical Center is in Kansas City, Kansas. Photos by KU University Relations staff: David McKinney, Doug Koch, and Sharon Hartbauer.

With so many atmospheric science programs, why should I choose KU?

- **PROGRAM QUALITY.** KU's atmospheric science program is small enough for undergraduate students to have close contact with the faculty members who teach their courses. Yet it is large enough to have fine facilities for students to use. Faculty members have active research programs and work on projects at the cutting edge of their fields.
- **RESEARCH OPPORTUNITIES FOR STUDENTS.** KU atmospheric science faculty members have active research programs, and they are eager to involve undergraduate students in them. Faculty members often can support the students with external funding. Students are also eligible for Undergraduate Research Awards from the University of Kansas.
- **INTERNSHIP PROGRAMS.** Students can enhance their educational experiences by participating in internship programs sponsored by the National Weather Service in Topeka; Pleasant Hill, Missouri; or the Aviation Weather Center in Kansas City. Students can also do internships at one of the many television stations in the area. Companies in the Kansas City metropolitan area that do air quality work often have internships available during the summer and semester breaks.
- **KU ENRICHMENT.** KU's faculty and variety of courses have attracted national attention. Lectures, plays, concerts, and activities will make your undergraduate years rewarding and enjoyable. Concerts and shows in KU's Lied Center Series bring many of the finest national performers to campus. In your department and on campus, you will meet people whose diverse traditions and cultures will broaden your experiences. In addition, nearby Kansas City offers an even wider range of opportunities.

If you would like information on other majors at KU, contact the University of Kansas, Office of Admissions and Scholarships, KU Visitor Center, 1502 Iowa St., Lawrence, KS 66045-7576. Telephone (785) 864-3911; fax: (785) 864-5017. E-mail: adm@ku.edu Web site: www.admissions.ku.edu

The University of Kansas prohibits discrimination on the basis of race, color, religion, sex, national origin, age, ancestry, disability, veteran status, sexual orientation, marital status, and parental status.

UNDERGRADUATE ADVISER:
Donna Tucker
OFFICE: *Lindley Hall*
1475 Jayhawk Blvd., Room 213
Lawrence, KS 66045-7613
PHONE: *(785) 864-5143*
E-MAIL: *dtucker@ku.edu*
WEB SITES:
http://chinook.atmo.ku.edu
and *www.geog.ku.edu*



The Department of Geography in the College of Liberal Arts & Sciences 2004-06

Is the study of atmospheric science (sometimes called meteorology) for me? To find out, you could ask yourself: Am I curious about what causes lightning or a rainbow or a powerful thunderstorm? Do I wonder about the reasons for the changing weather? Do I enjoy finding the solutions to puzzles? Am I good at math? Do I have an imaginative and original approach to discovering the solutions to problems?

What degrees are offered?

The atmospheric science program in the Department of Geography offers a Bachelor of Science (B.S.) degree in atmospheric science. This degree offers four options that include a general atmospheric science degree option, an air pollution meteorology option, a hydrometeorology option (a branch of meteorology especially concerned with precipitation), and a news media forecasting option.

What degree option should I choose?

Atmospheric science is a broad and diverse field, and graduates are employed in a large number of different areas. The general atmospheric science degree option is the most popular and provides students with expertise to enter a variety of specialty areas. If you are determined

to follow a career path that leads to television weather forecasting, addressing air quality and environmental issues, or addressing hydrological issues, such as flooding, then one of the other options is for you.

What is the faculty like?

Faculty members in the atmospheric science program are active in important research areas with ties to other departments at KU, other universities, operational forecast centers such as the Aviation Weather Center in Kansas City, and national laboratories such as the National Center for Atmospheric Research.

Opportunities abound for students to work with faculty members on research projects. Several students have presented their research results at scientific meetings.



Photo by Jennifer Larson, KU University Relations.

Atmospheric science faculty members are also strongly committed to teaching, and all atmospheric science lecture classes are taught by faculty members.

More information about atmospheric science courses, laboratory facilities, and research programs is provided on our Web site.

Can I get a scholarship?

Advanced KU students have been successful at winning scholarships from the American Meteorological Society.

One out of three KU first-year students is on a scholarship awarded by the Office of Admissions and Scholarships or by KU academic departments. Students on the Lawrence and Medical

Center campuses receive scholarships totaling more than \$21.4 million from private funds administered by the KU Endowment Association.

For information about scholarships based on academic merit, diversity, major, and residence, write or call the University of Kansas, Office of Admissions and Scholarships, KU Visitor Center, 1502 Iowa St., Lawrence, KS 66045-7576, (785) 864-3911, www.admissions.ku.edu.

For information about grants, loans, and other need-based financial aid, write or call KU's Office of Student Financial Aid, Strong Hall, 1450 Jayhawk Blvd., Room 50, Lawrence, KS 66045-7535, (785) 864-4700, www.ku.edu/~osfa.

How do I get into the atmospheric science program? Atmospheric science is offered through the Department of Geography in the College of Liberal Arts and Sciences. Once you have enrolled in the College, you can take atmospheric science courses. You become an atmospheric science major when you fill out a major declaration form in the office of the Department of Geography.

What will my course load be like? To graduate with a B.S. degree in atmospheric science from the University of Kansas, you must accumulate at least 124 credit hours in appropriate courses. Most full-time students in the program average about 15 to 17 credit hours or about four or five courses per semester.

The program requirements include 32 to 38 credit hours of atmospheric science courses and 18 hours of mathematics (23 hours if you start your mathematics courses with MATH 104).

What courses will I be taking? First-year students in the College of Liberal Arts and Sciences are required to take English composition, mathematics, and courses that fulfill general education degree requirements. The CLAS chapter of the *Undergraduate Catalog* gives more detailed information.



Jennifer Larson/KU University Relations

We also recommend that atmospheric science students take Introductory Meteorology, Introduction to Computing, and Speaker-Audience Communication in the first year.

What kind of job can I get with a B.S. degree in atmospheric science? There are a variety of jobs in both the public and private sector for students with B.S. degrees in atmospheric science.

The KU atmospheric science degree meets all the requirements for employment with the National Weather Service, the largest public-sector employer. Private companies that provide weather services also seek persons with B.S. degrees in atmospheric science.

Most jobs in air pollution meteorology are also in the private sector. In addition, there are some job opportunities in television and other mass media.

Your first year's schedule in atmospheric science may look something like this:

First semester	Hours
ENGL 101 Composition	3
MATH 104 Precalculus Mathematics	5
ATMO 105 Introductory Meteorology	5
EECS 138 Introduction to Computing	3
TOTAL	16
Second semester	Hours
ENGL 102 Composition and Literature	3
MATH 121 Calculus I	5
CHEM 184 Foundations of Chemistry	5
COMS 130 Speaker-Audience Communication	3
TOTAL	16

Students who have graduated from KU's atmospheric science program have been successful in all of these different types of careers.

If you are interested in a career in research or higher education, you will need

to obtain a graduate degree in atmospheric science. KU graduates have been successful in obtaining admission to prestigious graduate programs as well as in winning graduate fellowships.



Weather instruments on the roof of Malott Hall.

Deag Koch/KU University Relations



Jennifer Larson/KU University Relations

Can I study abroad?

KU offers low-cost, high-quality semester, academic year, spring and summer break study abroad programs in approximately 50 countries throughout the world. Students can study in Africa, the Americas, Asia, Australia, or Europe. The Office of Study Abroad, 108 Lippincott, (785) 864-3742, www.ku.edu/~osa, administers study abroad

and exchange programs in countries such as Brazil, France, Russia, Japan, Mexico, and Australia, among others.

The KU difference. KU and the city of Lawrence offer a variety of excellent cultural, musical and artistic events. You will be able to choose from an array of lectures, readings, exhibits, and performances. There are

also sports for spectators and participants with exciting Big 12 athletics, intramurals, and extensive recreational facilities.

The new Student Recreation Fitness Center features an indoor climbing wall, gymnasiums, a martial arts center, racquetball/squash courts, a walking track, and facilities for basketball, badminton, handball, football, soccer, water polo, and rugby.

KU is home to one of the top public-university library systems in the nation. Holdings presently include more than 3.8 million cataloged volumes; 350,000 maps and aerial photographs; 32,000 current subscriptions; thousands of manuscript, photographic, and archival pieces; many sets of microform materials and sound recordings; and a growing collection of electronic media.

KU's Spencer Museum of Art, one of the nation's premier university art museums, offers a 22,000-work collection known for its quality and scope. The KU Natural History Museum and Biodiversity Research Center houses some of the finest scientific collections in the country.

Each year, more than 60 Undergraduate Research Awards are available to students for original research projects supervised by KU faculty members. Students compete to receive \$500 to fund research during the academic year and at least \$1,300 for summer research projects.

The 2005 Fiske Guide to Colleges gives KU four stars for academics, social life, and overall quality of university life. Only a handful of state universities received higher marks for academics.

"With solid academics, outstanding extracurricular programs, winning athletics, and a stellar social life, the University of Kansas is one of the nation's best buys — about 13 percent less than the national public university average."

—2005 Fiske Guide to Colleges

What if my interests change after I come to KU? Maybe you will decide to seek a major in another area of science. As a student in the College of Liberal Arts and Sciences, you will have the chance to explore many academic areas and to take classes in many subjects. One of them will suit your career interests.

Whom can I contact for more information?

For further information about the atmospheric science major, advising, or advanced placement, write or call the Department Chair, Department of Geography, the University of Kansas, Lindley Hall, 1475 Jayhawk Blvd., Room 213, Lawrence, KS 66045-7613, (785) 864-5143.

Visit the program's Web site, <http://chinook.atmo.ku.edu>, or the department's Web site, www.geog.ku.edu.